



Community Health Equity & Promotion (CHEP): Supporting Health Equity in the Tenderloin Neighborhood



Tracey Packer, MPH
Director, CHEP Branch
Population Health Division
San Francisco Department of Public Health
September 20, 2016

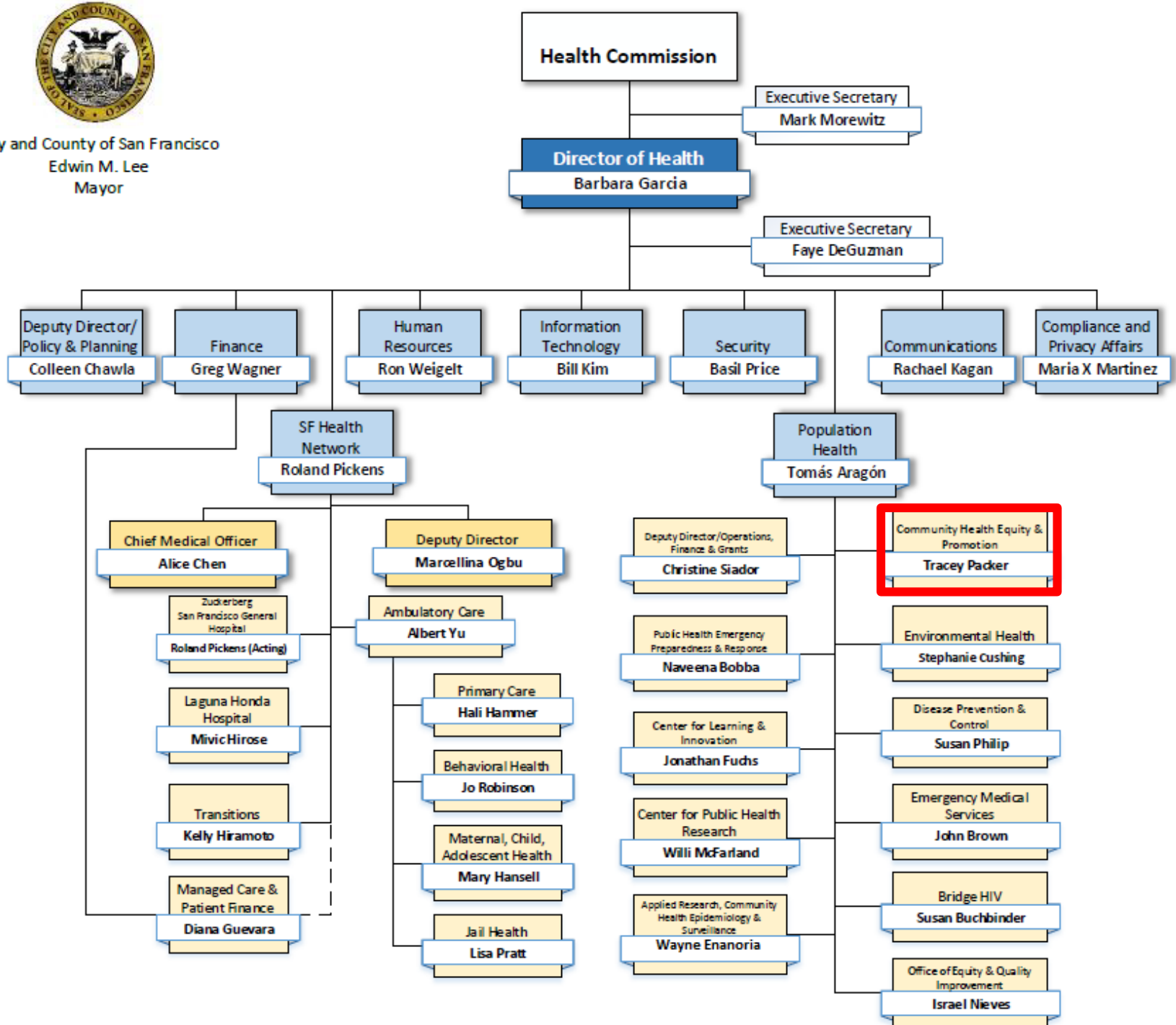


Presentation Overview

- ❖ Overview of CHEP Branch program areas and performance measures
- ❖ In-depth look at CHEP efforts aimed to improve health in the Tenderloin neighborhood



City and County of San Francisco
Edwin M. Lee
Mayor





Guided by Strategic Vision,
Action Plans, and Values

DATA SCIENCE & KNOWLEDGE INTEGRATION* (ARCHES, CPHR, Bridge HIV)

STRATEGIC PLANNING: Office of Health Equity & Quality Improvement

HEALTHY PLACES
(Protection)

Environmental
Health

HEALTHY PEOPLE
(Promotion)

Community
Health Equity
and Promotion

DISEASES
(Prevention)

Disease
Prevention
and Control

DISASTERS
(Preparedness)

Emergency
Preparedness
and Response,
and EMS

SF Health
Network (SFHN)
and
Community
& Academic
Partners

1. Safe and Healthy Living Environments (CHIP)

2. Healthy Eating and Physical Activity (CHIP)

3. Access to Quality Care and Services (CHIP)

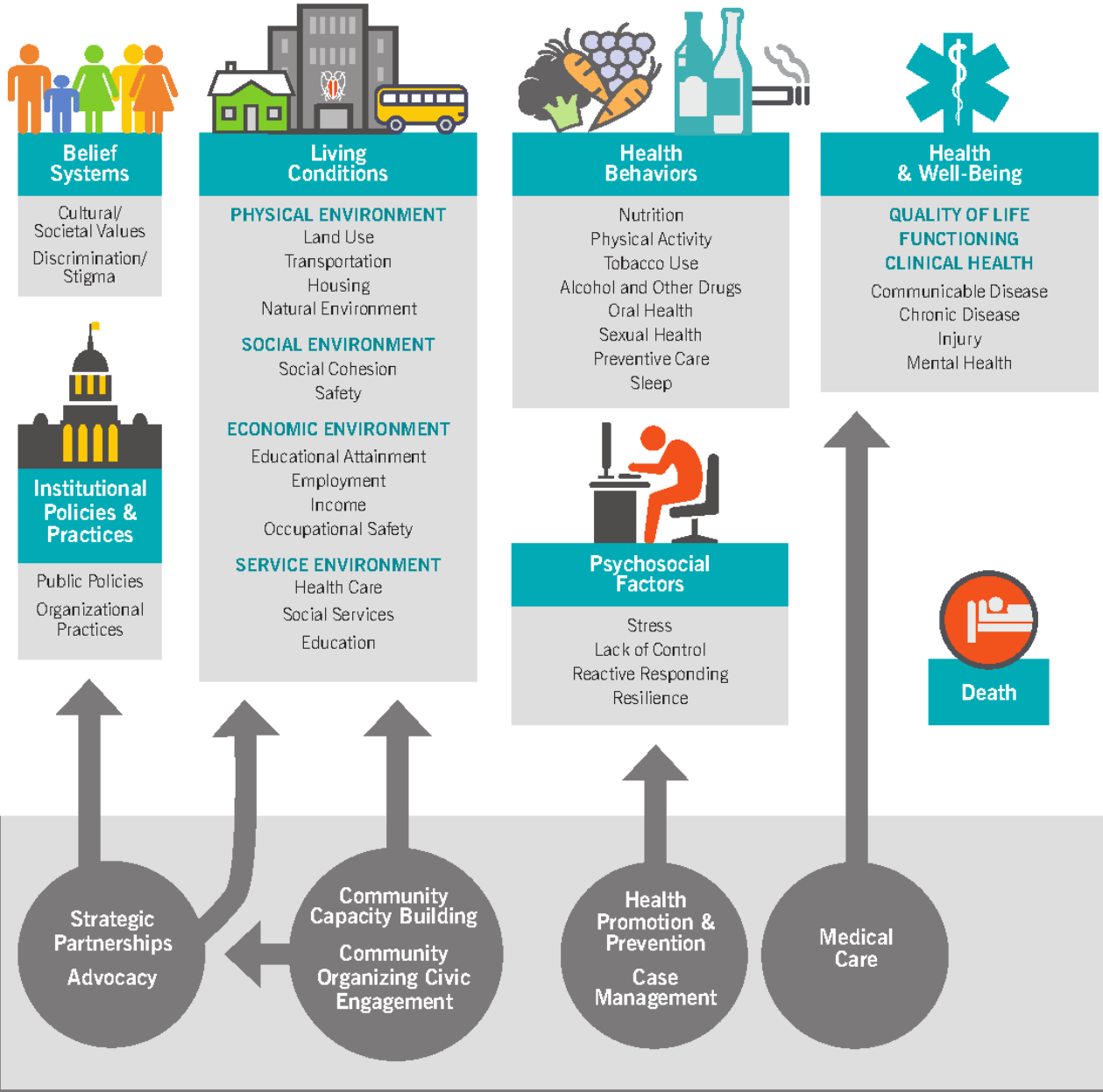
4. Black / African American Health

5. Maternal, Child, and Adolescent Health

6. Health for People at Risk or Living with HIV

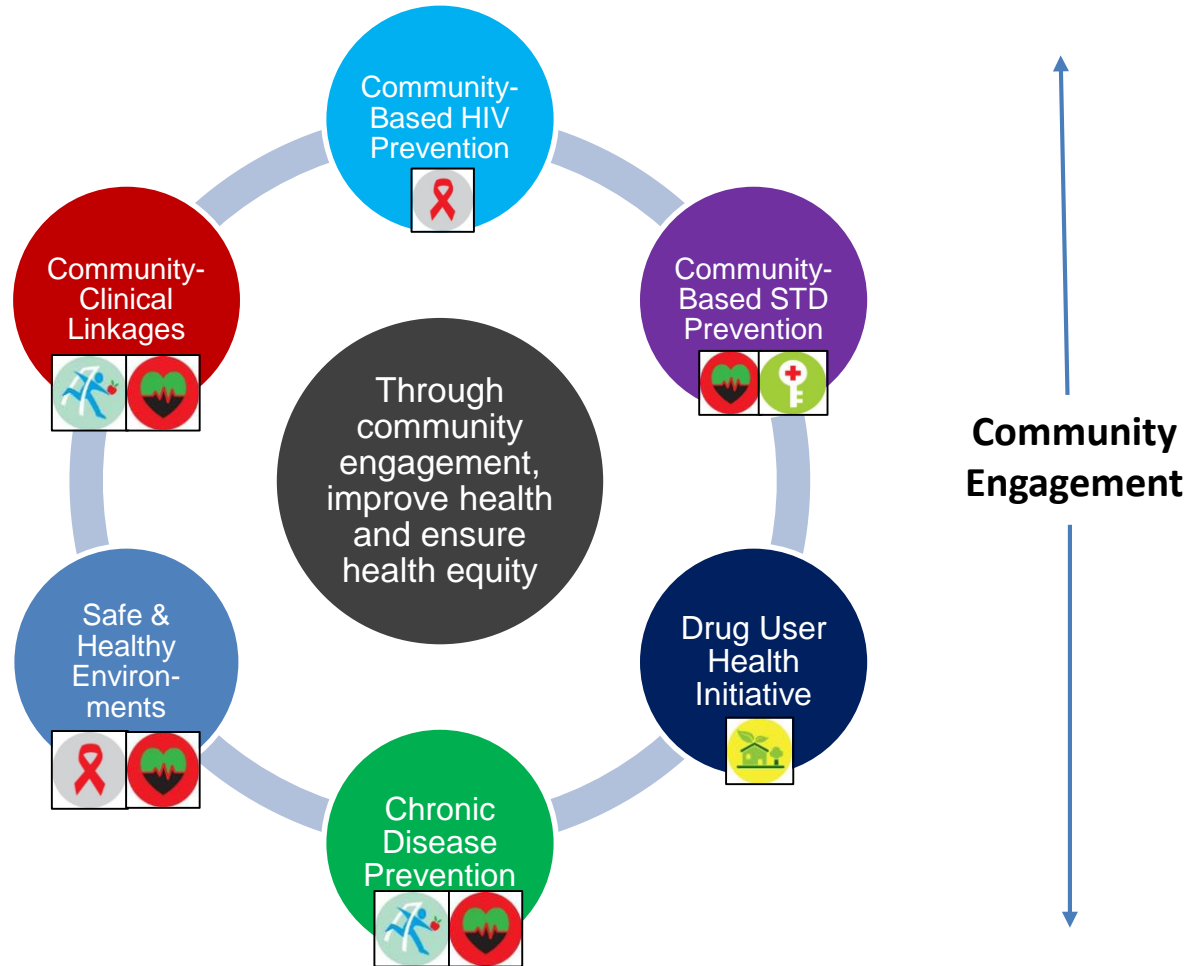
OPERATIONS: Office of Operations, Finance, and Grants Management

WORKFORCE: Center for Learning and Innovation





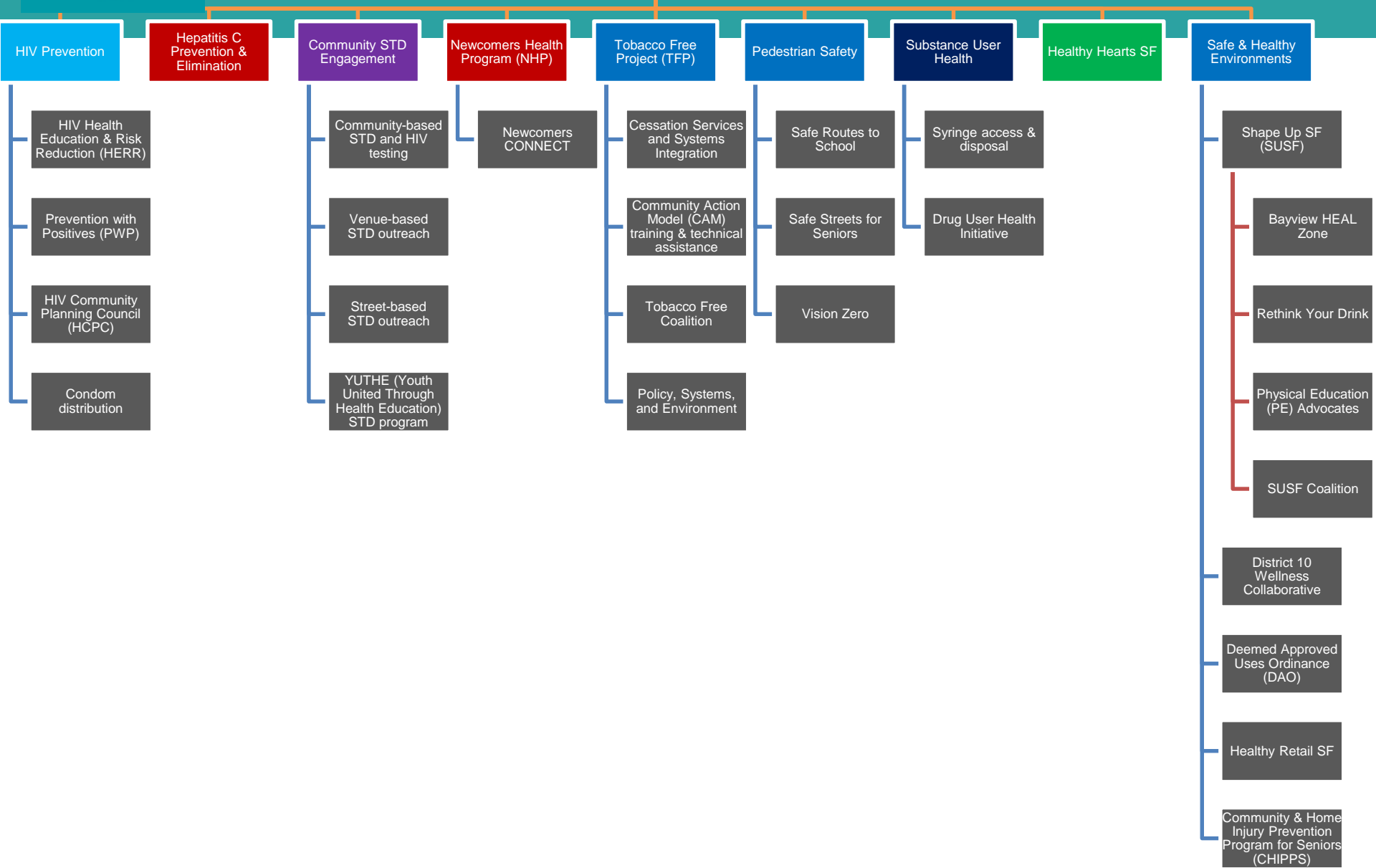
Alignment of CHEP Program Areas with DPH initiatives





CHEP Programs

Community Health Equity & Promotion





CHEP Performance Measures: Examples

Collective Impact Level: HCV

- Increased # screened and # initiating primary care-based treatment

Branch Level: Black/African American Health

- Increased % of CHEP programs that intentionally address Black/African American health disparities

Program Area Level: STD Prevention

- Increased # of venue-based chlamydia, gonorrhea, and syphilis tests among men who have sex with men

Individual Program Level: Newcomers Health Program

- Increased % of health insurance enrollment of newly documented refugees and asylees in SF

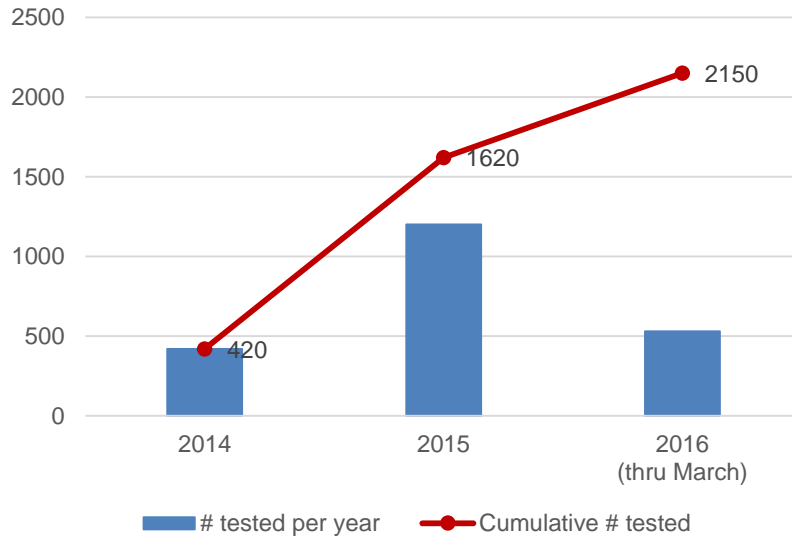


Hepatitis C

Increased # screened and # initiating primary care-based treatment

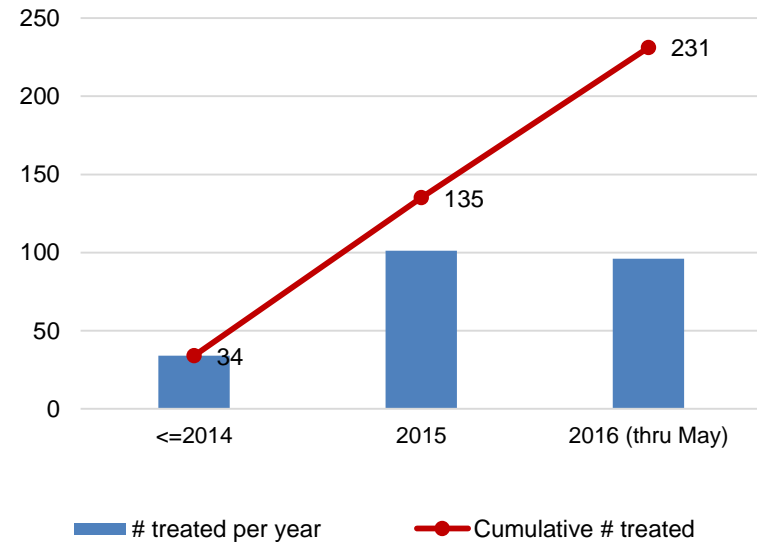
**2,150 people screened
for HCV since 2014***

Target: 3,318 by the end of 2016



**231 patients initiating primary care-
based HCV treatment to date****

Target: 360 by the end of 2016



*Glide, St. James Infirmary, SF AIDS Foundation,
ZSFG Opiate Treatment Outpatient Program,
Westside, BAART Market & Turk, Bayview Hunters
Point Foundation

**Data currently reflects Tom Waddell Urban Health Clinic,
Positive Health Program, Southeast Health Center. More
clinics to be added as data becomes available.



Black/African American Health

Increased % of CHEP programs that intentionally address Black/African American health disparities

Black/African American Health Disparities: CHEP Program Assessment

Assessment Domains:

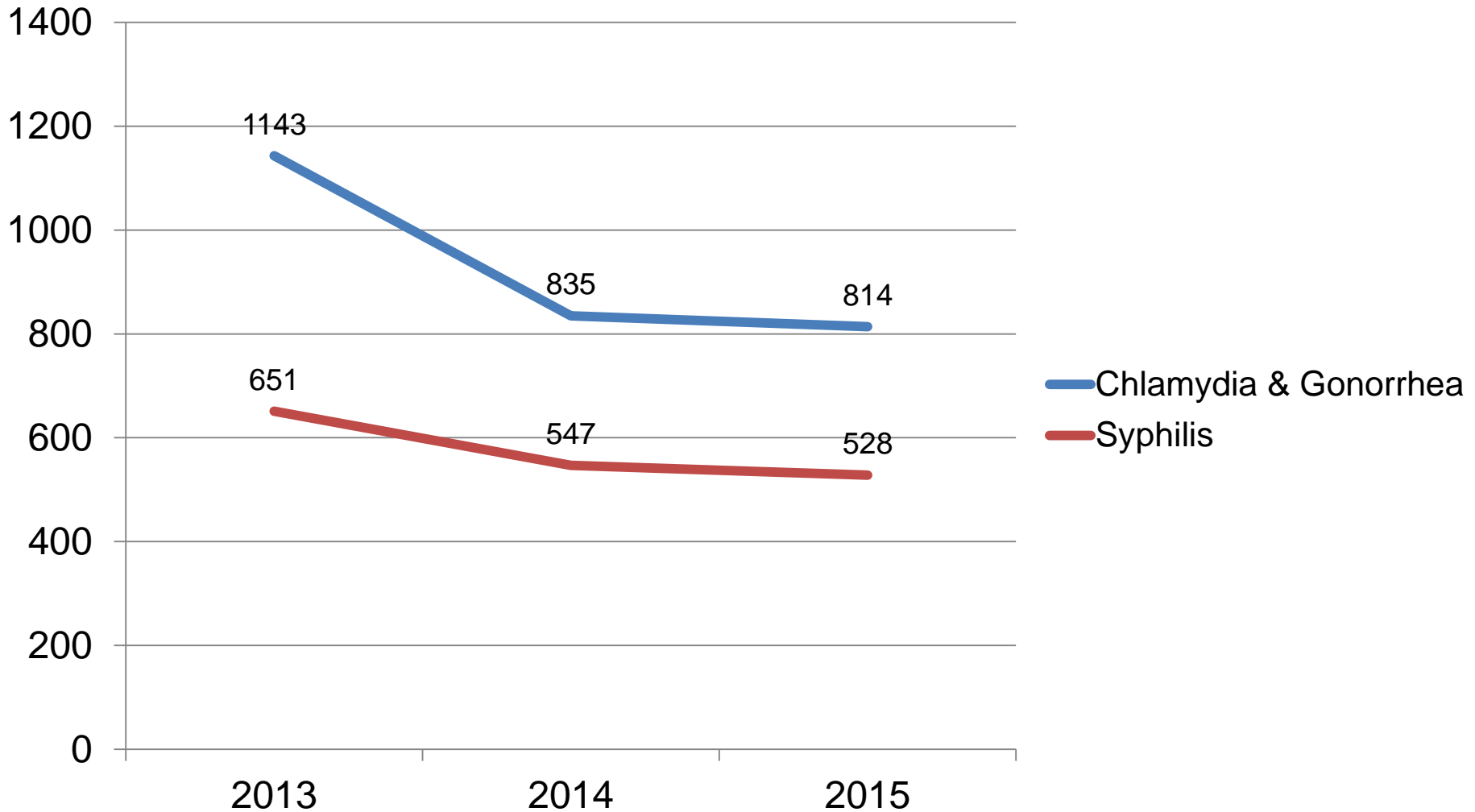
- Program elements
- Data
- Program locations
- Community input
- Customer/Client satisfaction
- Organizational partners
- Capacity-building
- Participant involvement in services/activities
- Cultural humility
- Program staffing

Domain	Examples	Program Self Rating	Description of How the Program Addresses This Domain (or justification for why it's not relevant)
Program Elements	<ul style="list-style-type: none"> • YUTHE • Tobacco Free Project smoking cessation 	0 – No or N/A 1 – Could be improved 2 – Sufficient	
Data	<ul style="list-style-type: none"> • Pedestrian safety data • HIV behavioral surveillance data 	0 – No or N/A 1 – Could be improved 2 – Sufficient	
Program locations	<ul style="list-style-type: none"> • Food Guardians • District 10 Wellness Collaborative 	0 – No or N/A 1 – Could be improved 2 – Sufficient	



STD Prevention

Increased # of venue-based chlamydia, gonorrhea, and syphilis tests among men who have sex with men

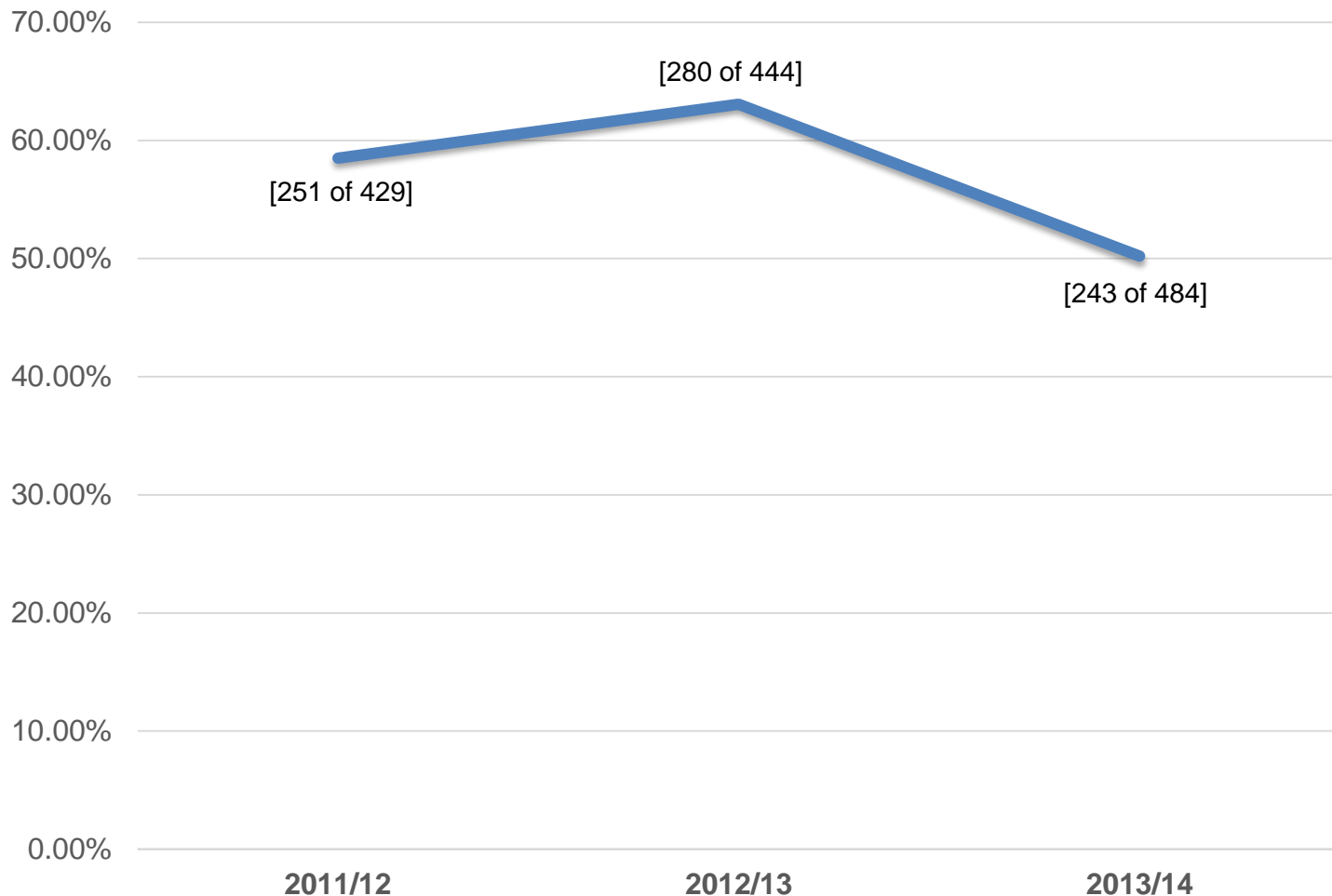




Newcomers Health Program

Increased % of health insurance enrollment of newly documented refugees and asylees in SF

Percent of Refugee and Asylee Referrals Enrolled in Health Insurance/Primary Care





Some of Our Customers in the Tenderloin

Corner Stores

SFPD

TL
Neighborhood
Association

SFUSD schools

Community Partners

SFHN

Community
based
organizations

People with and
at risk for HIV
and STDs



Workers in
massage
establishments
& restaurants

Patients & Clients

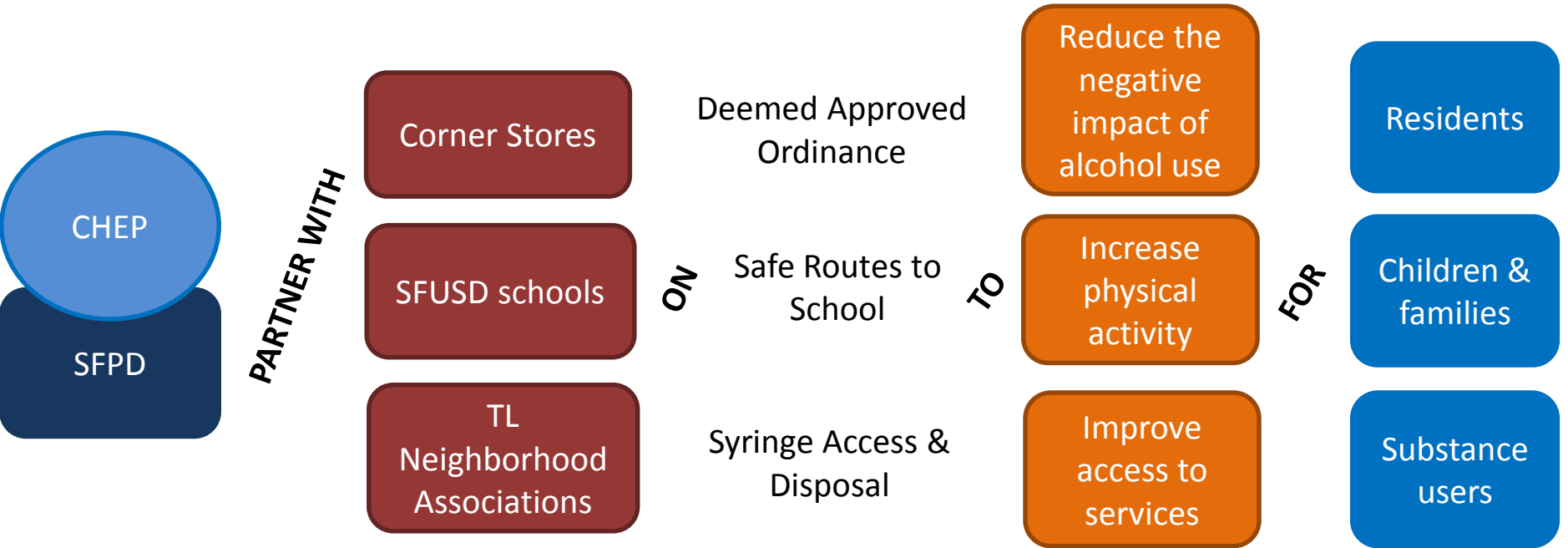
People who
inject drugs

Low income
Black/African
American and
Latino
communities

Pedestrians



An Example of How We Work: Collaboration for Collective Impact



These efforts contribute to: Reduced alcohol-related harms, reduced chronic disease, reduced HIV and HCV transmission



CHEP Working for Health Equity in the Tenderloin

CHEP Programs in and within one block of the Tenderloin



- Vision Zero
- Healthy Retail SF
- Deemed Approved Ordinance
- Tobacco Free Project
- Syringe Access & Disposal
- HIV, HCV, and STD testing
- ... and much more



Thank you



Thanks to:

- Patricia Erwin, Deputy Director
- Jacqueline McCright, Deputy Director
- Dara Geckeler, Integration and QI Coordinator
- CHEP Branch and DPH Leadership

